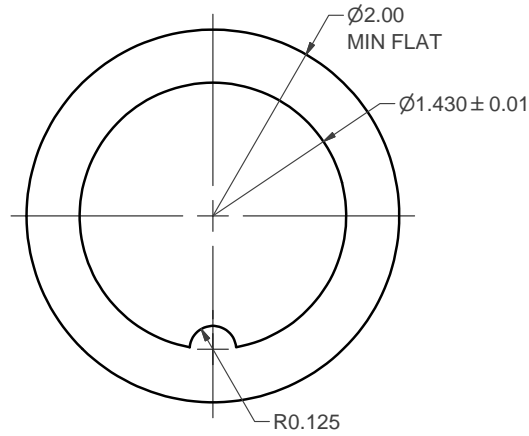
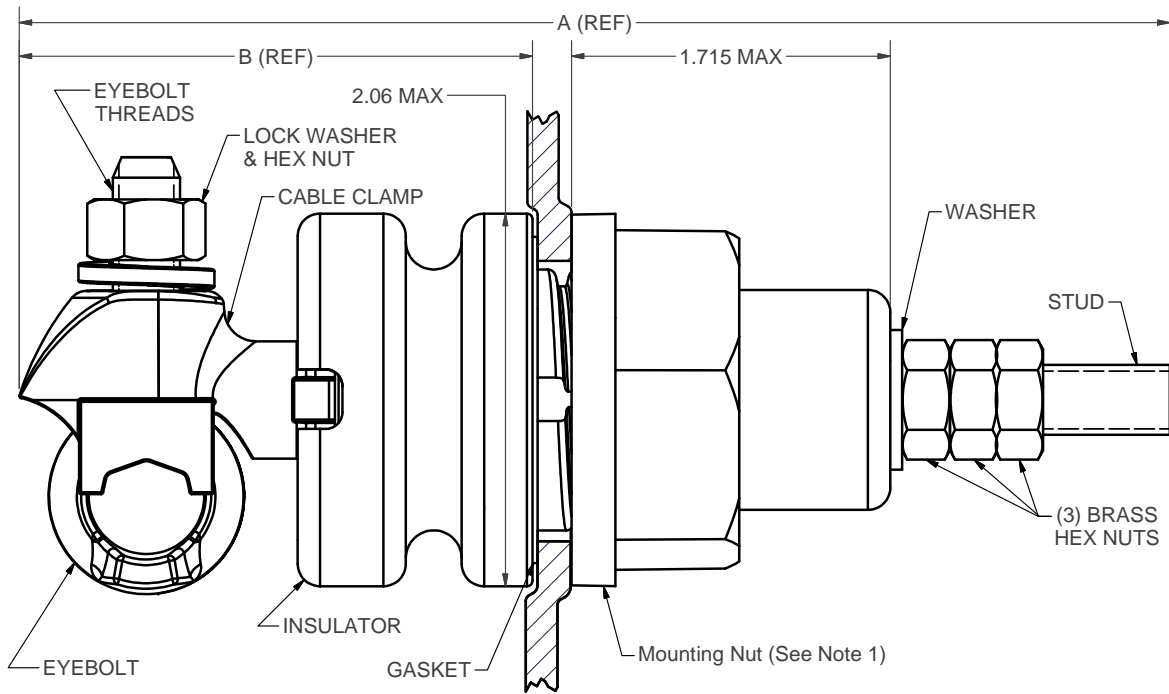


UNLESS OTHERWISE SPECIFIED			ERMCO COMPONENTS, INC.		DWG NO. 2A098015F01
SURFACES ✓	TOLERANCES		THE INFORMATION CONTAINED ON THIS DOCUMENT IS PROPRIETARY TO ERMCO COMPONENTS, INC. AND MAY NOT BE USED FOR ANY OTHER PURPOSES THAN THOSE EXPRESSLY AUTHORIZED BY ECI.		NUMBER OF SHS. 1
	2 PL DEC ± .010	3 PL DEC ± .005			
					TITLE: Outline (L.V. Bushing)
					FIRST MADE FOR: LV Bushings



SKETCH "A"
TANK HOLE DETAIL

Notes:
1. Torque bushing assembly to tank 19 ft-lb. ± 2

MODEL #	RATING					A	B	THREAD SIZE		CABLE
	KVA	KV CLASS	AMP MAX	HIPOT KV	IMPULSE KV BIL			EYEBOLT	STUD	
9U10LPB010	10/15	1.2	63	10	30	6.17	2.75	3/8-16	3/8-16	#6 SOLID - 4/0 STRANDED
9U10LPB025	25	1.2	104	10	30	6.40	3.02	1/2-13	3/8-16	#2 SOLID TO 350 MCM STRANDED
9U10LPB050	50	1.2	208	10	30	6.64	3.02	1/2-13	1/2-13	#2 SOLID TO 350 MCM STRANDED

DRAWN BY: Nicholas Adams	ECN B593 1/18/2011	APPROVAL	ECI	DWG NO. 2A098015F01 SH TITLE: Outline (L.V. Bushing)
ISSUED BY: Nicholas Adams	5/16/2012			

REVISIONS	
1	PRINTS TO ECI-BTL
Add notes and chgd Nut to Mounting Nut. ECN B748	
N. Adams 5/16/12	